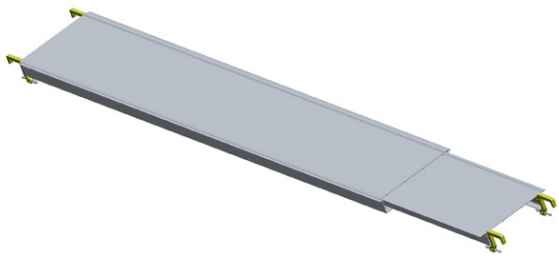


Technical sheet

Ref. 880222

L 2 to 3 m | 30cm telescopic aluminium stackable boards

The floors, handrails and netting are installed on the consoles and guardrails to make sure that the scaffolding is safe to work on.



FEATURES

Easy to join the elements together on the side to form the floor
 Easy handling and storage thanks to their low weight and locking system in the retracted position
 Accessories perfectly suited to working at heights and to different types of construction sites

SPECIFICATIONS

Lenght (mm)	3100
Width (mm)	300
Height (mm)	50
Weight (kg)	13,7

Technical description

Adjustable length from 2 to 3 m
 Can combine 2 elements to create a 60 cm wide floorboard

Actions : To work safely

Trades : Slate / Framework / Waterproofing / Metal / Tile